



**REGIONAL SPECIALISED METEOROLOGICAL CENTRE-TROPICAL CYCLONES, NEW DELHI
TROPICAL WEATHER OUTLOOK**

DEMS-RSMC SPECIAL TROPICAL CYCLONES NEW DELHI DATED 27.05.2022

TROPICAL WEATHER OUTLOOK FOR NORTH INDIAN OCEAN (THE BAY OF BENGAL OF BENGAL AND ARABIAN SEA) VALID FOR NEXT 120 HOURS ISSUED AT 0600 UTC OF 27.05.2022 BASED ON 0300 UTC OF 27.05.2022.

BAY OF BENGAL:

SCATTERED LOW AND MEDIUM CLOUDS WITH EMBEDDED MODERATE TO INTENSE CONVECTION LAY OVER WESTCENTRAL BAY OF BENGAL, OFF NORTH COASTAL ANDHRA PRADESH, SOUTH PARTS OF CENTRAL BAY OF BENGAL, GULF OF MARTABAN, AND TENASSERIM COAST. SCATTERED LOW AND MEDIUM CLOUDS WITH EMBEDDED MODERATE TO INTENSE CONVECTION LAY OVER ARAKAN COAST, NORTHEAST BAY OF BENGAL, NORTH ANDAMAN SEA, ADJOINING SOUTHEAST BAY OF BENGAL AND WEAK TO MODERATE CONVECTION LAY OVER SOUTHWEST BAY OF BENGAL.

PROBABILITY OF CYCLOGENESIS (FORMATION OF DEPRESSION) DURING NEXT 120 HRS:

24 HOURS	24-48 HOURS	48-72 HOURS	72-96 HOURS	96-120 HOURS
NIL	NIL	NIL	NIL	NIL

ARABIAN SEA:

SCATTERED LOW AND MEDIUM CLOUDS WITH EMBEDDED INTENSE TO VERY INTENSE CONVECTION LAY OVER SOUTHEAST ARABIAN SEA OFF KERALA COAST. SCATTERED LOW AND MEDIUM CLOUDS WITH EMBEDDED MODERATE TO INTENSE CONVECTION LAY OVER WESTCENTRAL ADJOINING SOUTH PARTS OF CENTRAL ARABIAN SEA AND COMORIN AREA.

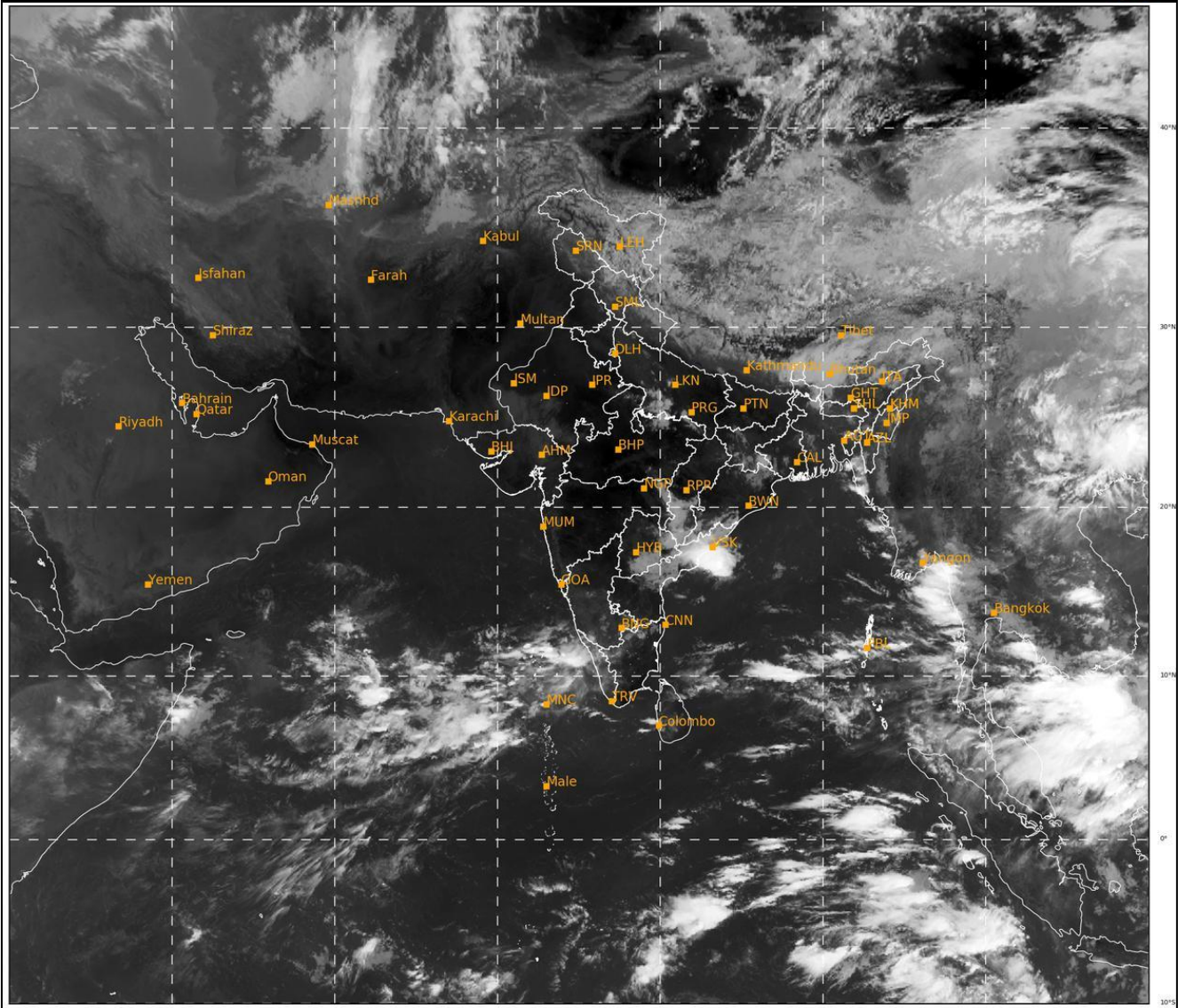
PROBABILITY OF CYCLOGENESIS (FORMATION OF DEPRESSION) DURING NEXT 120 HRS:

24 HOURS	24-48 HOURS	48-72 HOURS	72-96 HOURS	96-120 HOURS
NIL	NIL	NIL	NIL	NIL

REMARKS: NIL

SAT : INSAT-3D IMG
IMG_TIR1 10.8 um
L1C Mercator

27-05-2022/(0300 to 0327) GMT
27-05-2022/(0830 to 0857) IST



400

937

IMD, DELHI

PROBABILITY OF CYCLOGENESIS (FORMATION OF DEPRESSION):NIL: 0%, LOW: 1-33%, MODERATE: 34-66% AND HIGH: 67-100% This is a guidance Bulletin for the WMO/ESCAP Panel Member countries,. Please visit respective National websites for Country specific Bulletins

